

Union Council 2016-2017
Nov 14th, 2016: Meeting Agenda



Wisconsin Union
Experiences for a lifetime

5:30pm Call to Order Deshawn

- Dinner and WUD Committee/Club Goal presentations

6:00pm
• Approval of October meeting minutes Deshawn

6:05pm Open Forum

6:15pm WUD Committee/Club Goals Directorate

6:30pm Thinking Forward Together Jay Eckleberry

6:50pm Financial Report (1st Quarter) Susan Dibbell

7:00pm Subcommittee Reports

****REMINDER - Those seated on Council should also be seated on a subcommittee****

- External Relations
- Admin
 - WU1-1: Union Council makeup
- Facilities
 - Bike station update
- Dining
 - Transparency with policies
- Program and Leadership
 - Deletion of P&L 4.3

7:30pm Updates

- ASM

- Hoofers
- Union/Council
 - Union Response Planning Meeting on 11/18 @ 9:30am
- Officers

8:00pm Closing

**Union Council
Meeting Minutes
October 24, 2016**

Present: Deshawn McKinney, Mark Guthier, Madison Laning, George Cutlip, Omar Jandal, Lori Berquam, Jessica Franco-Morales, Susan Dibbell, Chris Verhaeghe, Caleb Foust, Lily Hansen, Peter Lipton, Adan Abu-Hakmeh, Carmen Gosey, Samuel Park

Guests: Victoria Fok, William Rosenthal, Danny Supernaw, Iffa Bhuiyan, Yusi Liu, Federica Ranelli, Lori DeMeuse

Call to Order: Deshawn McKinney called the meeting to order at 6:10 pm.

Approval of 9/26/16 Meeting Minutes

Madison Laning **made a motion to approve** the minutes. **Samuel Park seconded.** All approved. **Motion passed.**

Open Forum

No one was present to speak at the open forum.

WUD Goals

WUD Directors reported on their goals for this year:

Alternative Breaks – Director Iffa Bhuiyan

- More student involvement
- Two student trip leaders per each trip
- Doing some special events in addition to trips

Cuisine Committee – Director Federica Ranelli

- This is a new committee – the main goal is to get the committee up and running and differentiate it from other campus food organizations
- Wants to be a platform and advocate for innovations and discovery in the food system
- Looking for ways to engage people with an interest in agriculture and the food supply and also those interested in how food can build community for some and be polarizing for others

Hoofers Ski and Snowboard – President Danny Supernaw

- The main goal is to get those who have not had an opportunity to ski to a local ski hill
- Trying to make trips more affordable by doing more fundraising and sponsorship
- Offering a free introductory lesson
- Hope to have a better resale event

Distinguished Lectures Series – Director William Rosenthal

- One of the committee's main goals is to make sure there is a wide variety of speakers in both backgrounds and topics.
- Increase the amount and spread of events on research that is being done on campus.
- Increase the amount of committee informational carryover from one year to the next

Society and Politics – Director Omar Jandal

- Focusing on election related events
- Embracing student voices – hosting many different events reflecting many different viewpoints

- More sessions with graduate students on research being done on campus
- Exploring technology and how we can do things better

Art – Director Yusi Liu

- Modernization of gallery
- More impact for committee name on campus
- Committee members learn art installation

Hoofer Council – President Caleb Foust

- Bring all Hoofer club’s technology up to the level of the Sailing Club
- Thinking about expanding chapters to other UW schools

Wisconsin Union Directorate Goals (Policy P&L 2-1) – Adan Abu-Hakmeh and Lily Hansen

See attached policy.

Lily Hansen made a **motion to approve** the WUD goals. Peter Lipton **seconded the motion**. All approved.
Motion passed.

EID Council Goals – Susan Dibbell

Ms. Dibbell reported that the Union has created an Engagement, Inclusion and Diversity Council for permanent staff. EID is a priority of the Vice Chancellor for Finance and Administration. The committee is comprised of 8 full-time staff members representing all of the functional areas of the Union. The EID Council has established a mission, vision and goals statement which was reviewed by Ms. Dibbell. George Cutlip suggested adding a brief paragraph defining EID. Funds will be allocated in the Union budget for EID initiatives.

Memorial Union Reopening – Mark Guthier

Mr. Guthier reported that the first floor of Memorial Union will not open on November 1 as originally anticipated. At this time it is hoped that we will reach substantial completion by November 3. Next week a determination will be made on whether to open after Thanksgiving or wait until the beginning of the semester in January. A discussion took place on whether to open the non-restaurant units prior to exams if that is a possibility. Most felt opening as soon as possible was preferable. Samuel Park expressed frustration on behalf of student employees regarding the lack of information on the opening date.

Sub-Committee Reports

Deshawn McKinney reminded Council members that they need to serve on a Council sub-committee.

External Relations - Omar Jandal

- Determined the agenda items for the year
- Will look at why table tents are no longer used
- Will look at the procedure regarding banners. Want to make banners more accessible for Union entities and organizations.
- All policies and procedures will be reviewed

Administration – Deshawn McKinney

- The primary focus of the committee is the budget. Working on teaching committee members to read and understand the budget and budget issues.

Facilities – Adan Abu-Hakmeh

- The Reflection Room opened at Union South today. Emails were sent out to the different campus entities involved in proposing the room. Terms of use are posted on a sheet outside of the space.
- FP&M contacted the committee about building a bike shelter by the planter outside of Union South. The project will be funded by FP&M.

Mark Guthier inquired whether the Facilities Committee will bring the approval of the planned bike shelter to Union Council. Ms. Abu-Hakmeh responded that she believed it was already in the works, but will follow up with Asst. Director for Facilities Paul Broadhead. Mr. Guthier expressed concern that there was a more elaborate design for a bike shelter in the initial building plans that was dropped due to budgetary issues. He feels that Union Council should see the plans and be able to give feedback before the shelter is built. Members asked Ms. Abu-Hakmeh to bring more information on this to the next meeting.

Dining – Caleb Foust

- Some committee members want to discuss pricing. They feel like they are being priced out of purchasing food at the Union. Prices were recently reduced.
- Working on Dining Service touchstones by coming up with specific verbiage and codifying them in policy form.
- Working on mission statement and purpose of Dining Services
- Thinking about ways to bring pricing inline between Memorial Union and Union South.

Iffa Bhuiyan asked if the committee was working on offering more vegetarian food items. Caleb responded that they are, especially in the new Memorial Union food units.

Omar Jandal asked if it is possible to have classes work with Dining Services data. Mark Guthier noted that we partner with School of Human Ecology Customer Analytics classes.

Madison Laning brought up the issue that pork gelatin is an ingredient in most Babcock Dairy ice creams. The Dining Services Sub-Committee will add this topic to their agenda.

Samuel Park inquired about the process for handling food waste. Mr. Guthier explained that food that is prepared for catering orders but has not left the kitchen for serving is donated to shelters. Any restaurant food leftovers cannot be donated and are sent to compost. This year we are hoping to have zero food waste go to the landfill.

Program and Leadership – Lily Hansen

Ms. Hansen reported that the Program and Leadership Committee is working on policy changes.

- **P&L 3.2 – Changing of titles**
Lily Hansen **made a motion** to amend the policy as distributed and in addition change Asst. Dir for Social Education to Asst. Dir. for Program and Leadership Development. Mark Guthier **seconded the motion**. All approved. **Motion passed**.
- **P&L 6.2 – Old ticketing policy for WUD film that is out of date**
Adan Abu-Hakmeh **made a motion** to delete P&L 6.2. Lily Hansen **seconded** the motion. All approved. **Motion passed**.
- **WU1.1 – Changing position descriptions in the by-laws**
The by-law change will need to be voted on at next meeting due to time required for posting.

- **Officer position descriptions**
Will come to the November meeting

Madison Laning brought up that there is no University Staff representative on Union Council. She also feels there should be a student employee representative. Jessica Franco-Morales agreed regarding have a University Staff representative sit on Union Council. Mark Guthier responded there are good reasons to do this, but it would require a change to the constitution, which will take a campus-wide vote. The Administration Sub-Committee will add this topic to their agenda.

Updates

ASM – Carmen Gosey

- Early voting going on in Union South
- Student Council passed Indigenous People’s Day legislation

Dean of Students – Lori Berquam

Ms. Berquam provided an update on the Black Cultural Center. Staff visited a variety of centers on other campuses. A white paper was presented to the Chancellor. Room 106 in the Red Gym is a potential site for the center.

Deputy Director – Susan Dibbell

Ms. Dibbell reported that the Union’s financials are favorable as of 8/31. Retail dining units revenues exceeded budget. Expenses were under budget in Operating and Facilities Support Services due to staff vacancies.

The Union has been asked to issue voter ID’s at 7 campus locations on Election Day.

Director – Mark Guthier

Mr. Guthier explained that food is served at Union Council for two reasons: to eat together and build community and to test recipes for the catering staff. Funding comes from the Director’s Annual fund.

Budget discussions will begin at the November and December Union Council meetings.

Adjourn

Lily Hansen **made a motion** to adjourn. Adan Abu-Hakmeh **seconded the motion**. **Motion passed**. The meeting was adjourned at 8:15 pm.

Wisconsin Union Policy P & L 2-1
Wisconsin Union Directorate Goals 2016-17

- 1) Create a holistic, inclusive WUD-Hooper community that works to bring all students into Union spaces through increased leadership workshops and trainings and all-team bonding experiences.
- 2) Create a more cohesive brand identity among all Wisconsin Union Directorate committees to strengthen our brand reputation and showcase the breadth of our organization
- 3) Improve the Union's responsiveness to student needs by creating a plan for offering spaces for conversations and/or planning events on-the-fly as situations arise, in addition to proactively creating programs that incorporate current events around the world, as well as reflect current campus climate.
- 4) Improve transition for new student leaders by moving the selection process earlier in the year and improving internal memory.
- 5) Increase awareness for the leadership opportunities provided by the Union by establishing the Union as a place where student voice is valued and respected.

Additional background:

Related materials and support documents:

For interpretations, resolution of problems and special situations contact:

Secretary of Union Council: WU Director

Chair of Union Council: WU President

Policy Authority (suggested amendments should go through these bodies):

Date(s) of Action: September 16, 2014

Last Date of Review:

Page 1 of 1

Next Required Review Date:

Wisconsin Union Policy PL3-2
WUD Positions

The Directorate is composed of the following members:

- President
- Vice President- External Relations Program Administration
- Vice President- Internal Relations Leadership Development
- ~~Vice President Public Relations~~
- Alternative Breaks Committee Director
- Art Committee Director
- Cuisine Committee Director
- Distinguished Lecture Series Committee Director
- Film Committee Director
- Global Connections Committee Director
- ~~Memorial Union Entertainment~~
- Music Committee Director
- Performing Arts Committee Director
- Publications Committee Director
- Society and Politics Committee Director
- Hooper Council President
- Union Director
- Assistant Director, Social Education - non voting

Additional background:

Former Policy 7.1, Formerly SE3-2

Date(s) of Action:

March 22, 1972; February 27, 1974; October 24, 1973; January 31, 1979; November 19, 1979; October 15, 1983; December 11, 1985; January 28, 1987; May 1, 1989; December 8, 1992; December 22, 1993; December 6, 1994; December 11, 1997; March 30, 2000; April 17, 2002; December 12, 2002; December 7, 2005; January 22, 2008, May 14, 2014.

Last Date of Review:

Next Required Review Date:

Page 1 of 1

Wisconsin Union Policy WU1-1

Wisconsin Union Bylaws

1. Bylaws

The rules contained in these Bylaws to the Constitution of the Wisconsin Union shall govern the Council and subcommittees in all cases to which they are applicable and in which they are not inconsistent with the said Constitution.

2. Personnel of the Council

a. The fifteen voting members of the Council shall be as follows:

- (1) The Chair or his/her designee of the all student governing board and three other students reflecting the multicultural and diverse nature of the campus community, as designated by the all student governing board.
- (2) ~~Three~~^{Four} students who have been recommended by the Nominating Committee, to be selected by the outgoing Council under the procedure given in Bylaw 9: one to serve as President of the Union Council and the Union Directorate, one to serve as Vice President of the Union Council and the Union Directorate for ~~External Relations~~^{Program Administration}, and one to serve as Vice President of the Union Council and the Union Directorate for ~~Internal Relations~~^{Public Relations}, ~~and one to serve as Vice President of the Union Council and the Union Directorate for Project Management~~.
- (3) ~~Two~~^{One} student members of the Union Directorate to be elected by members of the incoming Directorate as a representative on the Council, serving as a chair of a Council committee. One of these members shall be the President of Hooper Council.
- (4) Two representatives of the faculty and academic staff, to be chosen by the Chancellor of the University for terms of two years, the terms expiring in alternate years.
- (5) Two alumni members, one to be chosen by the Chancellor of the University and the other by the governing board of the Alumni Association for terms of two years, the terms expiring in alternate years.
- (6) The Director of the Wisconsin Union.
- (7) The Associate Director: the officer of the Wisconsin Union in charge of business operations, ex-officio.

b. The non-voting members of the Council shall be as follows:

Last Date of Review:

Next Required Review Date:

Page 1 of 7

Wisconsin Union Policy WU1-1
Wisconsin Union Bylaws

- (1) The Assistant Director for Social Education of the Wisconsin Union.
- (2) The Dean of Students of the UW-Madison campus.

3. Quorum

At all meetings of the Council, the presence of a majority of the voting members, which includes two of the ~~three~~four student officers and either the Secretary or the Treasurer, shall be necessary to constitute a quorum. Any act of a majority present at a meeting at which there is a quorum shall be the act of the Council, except as may be otherwise provided by the Constitution or these Bylaws.

4. Meetings

The Union Council shall hold meetings at least once a month during the regular academic year. Meetings may be called by the President or upon written request of six members of the Council. All members will be duly notified at least 48 hours before a regular or special meeting by the Secretary of the Council of the time and place of meetings.

5. Rules of Operation

- a. Meetings of the Wisconsin Union Council and its subcommittees will be conducted according to Robert's Rules of Order, newly revised. The President may appoint a parliamentarian.
- b. There will be no proxy or absentee voting. In the case where a member of Union Council is part of the selection pool for a Directorate position, the right to vote or participate in deliberations pertaining to the selection is waived.
- c. The Executive Committee of Union Council will consist of the President, the ~~two~~three Vice Presidents, the Secretary and the Treasurer of Council. Other members of Council are privileged to attend and participate in Executive Committee sessions. The Executive Committee will set agendas for all Council meetings.
- d. The Council Executive Committee will set agendas at least five days prior to each regularly scheduled Council meeting. To be considered for placement on the agenda, items must be submitted to a member of the Executive Committee prior to the agenda meeting.
- e. Non-Council members or groups wanting to present issues to be considered by Council must submit their requests to a member of the Council Executive Committee before the agenda meeting to be considered for placement on that

Last Date of Review:

Next Required Review Date:

Page 2 of 7



Wisconsin Union
Experiences for a lifetime

Wisconsin Union Policy WU1-1
Wisconsin Union Bylaws

agenda. The request will be considered with other New Business items and may be scheduled for a later meeting or as soon as time is available.

- f. At a regular Council meeting there will be a limit of three non-member speakers for any proposal from (a), unless Council is asked to consider two sides of a question. Then there will be a limit of two non-member speakers for each position introduced. There is a 10-minute per speaker maximum presentation time for non-member speakers for presentation of the issues.

6. Annual Meeting

The annual meeting of the Union Council shall be held in April or May and shall be the occasion of recognizing outgoing and incoming Council and Directorate members.

7. Term of Office of Council Members

- a. Faculty, academic staff and alumni appointees, selected as provided in Section 2a (4) and 2a (5) of the Bylaws, shall be appointed by May 1, or as soon thereafter as possible, the terms expiring after two years, at the close of the annual meeting. Faculty, academic staff and alumni members may be reappointed to succeed themselves once.
- b. The all-student governing board representatives, selected as provided in Section 2a (1) of the Bylaws, shall be named by May 1, or as soon as possible thereafter, and shall serve for a term of approximately one year, from the close of the annual Council meeting to the close of the succeeding annual Council meeting.
- c. Union Council officers and Union Directorate representatives, selected as provided in Sections 2a (2), 2a (3), 7 and 8 of the Bylaws, shall serve for a term of approximately one year, from the close of the annual Council meeting to the close of the succeeding annual Council meeting.

8. The Union Directorate

a. Membership

The Union officers and directors of all standing committees (referred to in the constitution as "House Committees") as well as the President of the Wisconsin Hoofers, which are organized under the Union auspices, shall comprise a board to be known as the Union Directorate. Non-voting members of the Directorate include: the Union Director or her/his representative and the Assistant Director-Social Education or her/his program staff representative.

Last Date of Review:

Next Required Review Date:

Page 3 of 7

Wisconsin Union Policy WU1-1
Wisconsin Union Bylaws

b. Functions

The functions of the Directorate shall be to coordinate the work of the several committees and clubs organized under Union auspices, discuss common problems, study the techniques of effective group work and community service, and formulate social and educational programs and policies for recommendation to the Union Council.

c. Method of Selection

Committee directors shall be elected by the Council at a meeting of the Council in the spring, from the nominees submitted by a nominating committee. The nominating committee shall consist of the ~~four~~ three incoming officers of the Council and Directorate, the outgoing Vice President for ~~Public Relations~~ Internal Relations of the Council and Directorate, and one program staff representative, appointed by the President of the Council and approved by the Council. The vote by the Council shall be taken by written ballot without further nomination and a simple majority shall be required for election.

d. Term of Office

Newly elected Directorate members shall meet and begin preparations for the ensuing year immediately after appointment but shall not assume the responsibilities of office until after the annual meeting of the Council. They shall continue as Directorate members in office through the annual meeting of the Council of the following year; the committee directors, however, being subject to recall by the Council.

e. Recall

A committee director may be recommended by a majority of the Union officers to be relieved of her/his duties for cause, subject to approval by a majority vote of Council, and consistent with guidelines established by Directorate and confirmed by Council, to insure due process for the director. Pending Council action, the director may be suspended by the Union officers if necessary for a period not exceeding the time to the next regularly scheduled Council meeting.

f. Fiscal Responsibility

The Directorate may sponsor or manage certain revenue-producing programs provided that the finances for such programs are managed within the Union revolving fund pursuant to Statute 20.906(1), that such programs have the approval of the Union Council and that all surpluses are turned over annually to a

Last Date of Review:

Next Required Review Date:

Page 4 of 7

Wisconsin Union Policy WU1-1
Wisconsin Union Bylaws

general Union purpose with the exception of Hooper club surpluses, which are intended for future capital acquisitions.

A separate Distinguished Lecture Series fund is to be established, an account distinct from the Union's general operating fund and from other Wisconsin Union Directorate funds. The fund is directly under the auspices of WUD and will follow the same program approval process as established for all WUD free programs. All programs will be free of charge. All funds remaining at the end of the academic year will carry forward to the new fiscal year.

g. Rules

The Directorate shall formulate its own rules of parliamentary procedure.

h. Summer Operation

The summer program is implemented by the summer program coordinators selected by Union Council. The voting members of the nominating committee for the summer program coordinators are the outgoing Vice President for External Relations, the incoming Vice President for Internal Relations, and a program staff representative appointed by the President.

9. Officers of the Union Council and Union Directorate

- a. The Officers of the Council and Union Directorate shall be elected by the Council at a meeting of Council before spring break from the nominees submitted by a nominating committee. The nominating committee shall consist of: the outgoing President and two representatives of the Council, one of them being a non-student representative and one of them being an all student governing board representative, both appointed by the President of the Council and approved by the Council. The outgoing Vice President for ~~Public-Internal~~ Relations and one program staff representative appointed by the President shall serve as ex-officio, non-voting members of the nominating committee. The vote by Council shall be taken by written ballot without further nomination and a simple majority shall be required for election.
- b. The President of the Council shall have power to vote only in case of a tie, except in the election of the Council President and Vice Presidents.
- c. In the absence of the President, the Vice President of Council and Directorate for ~~External Relations~~~~Program Administration~~ shall chair the Union Council, and the Vice President of Council and Directorate for ~~Public-Internal~~ Relations shall chair Directorate.

Last Date of Review:

Next Required Review Date:

Page 5 of 7

Wisconsin Union Policy WU1-1
Wisconsin Union Bylaws

- d. The officers of the Council and Directorate may be relieved of their duties for cause by the Council, in accordance with recall procedures established by the Council. Upon written petition of five voting members of the Council, the Council will appoint a special subcommittee of the council composed of five voting members of the Council to investigate charges and determine whether the validity of charges warrant bringing the recall petition to the full Council. In such cases as the recall petition is brought to the Council, a simple majority of the voting members of Council is required for recall with the person under consideration of recall not eligible to vote. Typical grounds for recall would include, but not be limited to, the following: negligence of duty, unavailability to perform job functions as described in the officer job description policy.
- e. The officers of the Council and the Directorate shall be replaced only in the same manner in which they were originally selected.

10. Union Council-Union Directorate Meeting

A joint meeting of Union Council and Union Directorate shall be held in the fall semester.

11. Director's Duties

The Director shall be the staff officer generally responsible for the operations of the Wisconsin Union. The Director shall be employed by the Board of Regents, which shall take into consideration the recommendations of the Union Council and the President.

- a. The Director shall be charged with coordinating all the various functions of the buildings and the interests of all the various groups served by the buildings.
- b. The Director shall make reports from time to time showing the operations of the Wisconsin Union.
- c. The Director may act for the Union Council, discharging the functions of the Union Council, when so requested by the Union Council.
- d. The Director, or a staff member whom she/he may appoint as a substitute, shall be a non-voting member of all standing committees and special interest clubs organized under the auspices of the Union.
- e. The Director's further functions in the buildings, beyond the responsibility to the Board of Regents, shall be as the Union Council may provide.

12. Amendments to Bylaws

Last Date of Review:

Next Required Review Date:

Page 6 of 7

Wisconsin Union Policy WU1-1
Wisconsin Union Bylaws

These Bylaws may be amended at any regular or special meeting of the Council, by a vote of eight (8) members of the Council, provided the amendment is submitted in writing at least one week previously at either a regular or special meeting.

For interpretations, resolution of problems, and special situations contact:

Secretary of Union Council: WU Director

Chair of Union Council: WU President

Policy Authority (suggested amendments should go through these bodies):

Executive Committee of Union Council

Union Council

Date(s) of Action:

March 6, 1950; Rerun April 30, 1952; Revised March 21, 1956; Amended March 24, 1965; Rerun June 12, 1968; Amended April 15, 1969; Amended March 11, 1970; Rerun December 4, 1970; Amended March 8, 1972; Amended April 12, 1972; Amended September 13, 1972; Amended October 11, 1972; Amended September 12, 1973; Amended February 11, 1976; Amended February 7, 1978; Amended February 22, 1978; Amended December 10, 1979; Amended April 26, 1982; Amended March 14, 1984; Amended May 7, 1990; Amended December 4, 1990; Amended March 31, 1992; Amended December 2, 2002; Amended April 24, 2003; Amended February 16, 2004; Amended April 20, 2004; Amended September 17, 2008; Amended December 11, 2008

Last Date of Review:

Next Required Review Date:

Page 7 of 7



Wisconsin Union
Experiences for a lifetime

Wisconsin Union
STEWARD TEAM
Thinking Forward Together

IDENTIFIED STRENGTHS OF THE WISCONSIN UNION

(Through October, 2016, listed in no priority order)

LOCATIONS/SPACES

We have successfully created welcoming, clean and accessible spaces that many in the community feel ownership and pride for. Spaces where the community can make it theirs/what they want it to be while feeling like they are a part of something bigger, a larger purpose. Spaces that effectively mix art and design capturing the Wisconsin experience and sensibility, reflecting our culture. *Examples include, but are not limited to:*

- *The Terrace/The Lake*
- *Union South*
- *Marquee Theater*
- *Wheelhouse Studios*
- *Signature Dining Spaces*
- *Recreation Activities*

EVENTS/SERVICE

We provide an environment where there is always something going on, a place to go when you do not know where else to go, where “every day is an event.” We are a venue to new experiences and experimenting safely with new ideas and innovations that are not necessarily available elsewhere. We do this with good customer service. *Examples include, but are not limited to:*

- *Badger Bash*
- *Union Theater Program*
- *Marquee Movies*
- *World Music Festival*
- *Free Art Friday*
- *Game Watches*

more

TRUST IN STUDENTS

We offer UW students a wide variety of learning experiences, paid and unpaid, that allow them to develop transferable skills while creating and furthering the Union mission. Students as the agents of doing at the Union, with the autonomy and ownership we offer them, create a relevancy and vibrancy that demonstrates respect for their perspectives, interests and skill development. *Examples include, but are not limited to:*

- *Student majority governance*
- *Numerous leadership opportunities*
- *Student-Staff partnership*
- *Flexible student employment*
- *Opportunity to experiment and grow*

COMMUNITY PASSION

The Union, and its greater purpose, is accepted and loved by the larger community. A highly valued infrastructure, demonstrated use of the facilities, and highly committed Union Membership demonstrate the perception of the Union as a builder of community and active participant in creating a positive campus climate. *Examples include, but are not limited to:*

- *Strong Membership base*
- *Conferences/Meetings usage*
- *Response to free programming*
- *Multigenerational use*
- *Sense of ownership/pride for organization*

COMMITTED & KNOWLEDGEABLE STAFF

To a high degree, Union staff are committed, knowledgeable and capable to meet both the daily and extraordinary challenges of being UW-Madison's social center. Staff are dedicated to the success of the organization and service to the community. A "can do" attitude combined with resourcefulness and creativity create a positive environment for both meeting the mission and providing for a fun, team-oriented workspace. *Examples include, but are not limited to:*

- *Past and continuing success*
- *Commitment to student-staff partnership*
- *Internal collaboration*
- *Active use of employee skills and passions*
- *Daily creative problem solving*

Wisconsin Union Policy PL4-3
Establishment of WUD Partnership Relationships

In seeking to complement the academic mission of the University of Wisconsin-Madison, it is the general mission of the Wisconsin Union Directorate to provide opportunities for students, faculty, staff and Union members, to participate in a large portion of the social, educational, cultural and recreational programs held on campus.

In fulfilling its purpose, the Wisconsin Union Directorate recognizes the potential importance of establishing mutually beneficial relationships with other organizations to provide ongoing programs and/or services. This type of relationship is to be recognized as a partnership. At this time, Union Council and WUD recognizes GUTS/HASH, Bernie's Place, Youngblood and One-to-One Tutoring as partnership arrangements. Therefore, cosponsorship policies and guidelines are not applicable to these organizations.

-The continuing program or service provided must complement the mission of the Wisconsin Union and adhere to its policies and procedures.

-Partnership agreements between WUD and the program/activity should be reviewed periodically by the Wisconsin Union Directorate.

-A partnership usually, but not necessarily, results in ongoing support either through financial, personnel, space or in-kind levels of support.

-As a member of a partnership activity, the Wisconsin Union Directorate shall be represented on the decision making bodies of such organizations.

Additional background:

Former Policy 7.18; Formerly SE4-3

Date(s) of Action:

May 8, 1985; July 1, 1985

Last Date of Review:

Next Required Review Date:

Page 1 of 1



	CURRENT BUDGET	CURRENT ACTUAL	BUDGET VARIANCE	PRIOR ACTUAL	
REVENUE					
OPERATIONS & PROGRAMS					
RETAIL DINING	\$4,609,492	\$4,548,599	(\$60,893)	\$4,861,894	Restaurants and Markets & Cafes
CATERING	1,345,562	1,535,544	189,982	1,540,184	MU/US and Grainger Catering, plus Conference Centers
FACILITY RENTALS & FEES	911,522	928,513	16,991	918,967	US Hotel/IMU Guestrooms, AV rentals, campus vending, Facility fees,...
PROGRAMS	572,473	547,344	(25,129)	492,640	Theater Operations/Season, Minicourses, Alt Breaks, Hoofers...
SUBTOTAL OPS&PROG	7,439,049	7,560,000	120,951	7,813,685	
SEG FEES - WU	2,642,148	2,642,148		2,646,579	
SEG FEES - UBP	1,847,655	1,847,655		1,851,693	
PARTNERSHIP/WISCARD RE	197,806	171,143	(26,663)	183,513	Wiscard partnership fees, ATM commissions, Housing Wiscard web transaction fee reimbursement,...
CAMPUS/OTHER REIMBURS	227,471	156,819	(70,652)	127,917	Campus Photo ID Office/CESO support, student theater ticket subsidy supp, offsetting cost reimbursements, ...
MEMBERSHIP & MISC	40,925	44,009	3,084	34,733	Membership, interest income, miscellaneous gifts/contributions, ...
TOTAL REVENUE	12,395,054	12,421,774	26,720	12,658,120	
EXPENSES					
COST OF GOODS SOLD	2,485,577	2,397,069	(88,508)	2,646,312	Food costs, products and costs associated with generating revenue by the units
DIRECT OP EXPENSES	3,238,934	3,073,551	(165,383)	3,122,681	Salaries/wages/fringes, general expenses for the revenue units, Hooper expenses, Minicourses,...
SUPPORT SERVICES	1,275,997	1,144,397	(131,600)	1,069,774	
FACILITIES	1,799,203	1,660,800	(138,403)	1,582,610	
PROGRAMS & LEADERSHIP	460,228	462,222	1,994	351,747	Includes cost of WUD no fee or admission cost programming expenses
DEPRECIATION/BUILDINGS	96,408	96,407	(1)	96,481	
MAJOR REPRS/BLDGS & EQ	323,313	407,996	84,683	309,272	Includes UBP commitment
UTILITIES/TAXES/INS/TELEP	205,282	189,081	(16,201)	196,073	
STATE/UW ASSESSMENTS	513,176	497,366	(15,810)	463,644	
INTEREST EXPENSE/BONDS	1,715,223	1,715,223		1,694,574	
OTHER & OFFSETTING EXPI	149,970	142,384	(7,586)	78,220	Wiscard credit card fees, UBP project swf, cashier testing services...
TOTAL EXPENSE	12,263,311	11,786,496	(476,815)	11,611,388	
NET INCOME/LOSS	131,743	635,278	503,535	1,046,732	

Wisconsin Union
Income Statement - Revenue/Expense
Year to Date
As of September 30, 2016

	PRIOR ACTUAL	CURRENT BUDGET	CURRENT ACTUAL	PRIOR CS %	BUDGET CS %	CURRENT CS %	PRIOR YEAR VARIANCE	PRIOR YEAR %	BUDGET VARIANCE	BUDGET %
REVENUE										
Direct Operating Revenue										
Restaurants	\$3,172,096	\$2,935,124	\$2,970,567	25.1%	23.7%	23.9%	(\$201,529)	(6.4%)	\$35,443	1.2%
Markets & Cafes	1,689,798	1,674,368	1,578,032	13.3%	13.5%	12.7%	(111,766)	(6.6%)	(96,336)	(5.8%)
WU Catering	1,236,984	1,034,000	1,234,163	9.8%	8.3%	9.9%	(2,821)	(0.2%)	200,163	19.4%
Conf Center Catering	303,200	311,562	301,381	2.4%	2.5%	2.4%	(1,819)	(0.6%)	(10,181)	(3.3%)
Retail	659,956	702,500	683,910	5.2%	5.7%	5.5%	23,954	3.6%	(18,590)	(2.6%)
Programs	492,640	572,473	547,344	3.9%	4.6%	4.4%	54,704	11.1%	(25,129)	(4.4%)
Total Op Revenue	7,554,674	7,230,027	7,315,397	59.7%	58.3%	58.9%	(239,277)	(3.2%)	85,370	1.2%
Indirect Revenue										
Commissions	104,655	106,291	106,289	0.8%	0.9%	0.9%	1,634	1.6%	(2)	(0.0%)
Rentals	115,625	117,784	141,388	0.9%	1.0%	1.1%	25,763	22.3%	23,604	20.0%
Service Revenue	267,246	305,771	204,397	2.1%	2.5%	1.6%	(62,849)	(23.5%)	(101,374)	(33.2%)
Reimbursements	5,446	24,000	54,110	0.0%	0.2%	0.4%	48,664	893.6%	30,110	125.5%
Total Indirect Revenue	492,972	553,846	506,184	3.9%	4.5%	4.1%	13,212	2.7%	(47,662)	(8.6%)
Net Operating Revenue	8,047,646	7,783,873	7,821,581	63.6%	62.8%	63.0%	(226,065)	(2.8%)	37,708	0.5%
Other Revenue										
Student Segregated Fees	2,646,579	2,642,148	2,642,148	20.9%	21.3%	21.3%	(4,431)	(0.2%)		
Student Seg Fees - UB	1,851,693	1,847,655	1,847,655	14.6%	14.9%	14.9%	(4,038)	(0.2%)		
Campus Vending	60,869	65,738	65,738	0.5%	0.5%	0.5%	4,869	8.0%		
Membership	19,185	26,225	25,898	0.2%	0.2%	0.2%	6,713	35.0%	(327)	(1.2%)
Investment Revenue	1,797	10,200	6,590	0.0%	0.1%	0.1%	4,793	266.7%	(3,610)	(35.4%)
Miscellaneous	30,350	19,215	12,162	0.2%	0.2%	0.1%	(18,188)	(59.9%)	(7,053)	(36.7%)
Total Other Revenue	4,610,473	4,611,181	4,600,191	36.4%	37.2%	37.0%	(10,282)	(0.2%)	(10,990)	(0.2%)
Total Revenue	12,658,119	12,395,054	12,421,772	100.0%	100.0%	100.0%	(236,347)	(1.9%)	26,718	0.2%
EXPENSES										
Cost of Goods Sold										
Food	2,624,464	2,457,558	2,370,468	20.7%	19.8%	19.1%	(253,996)	(9.7%)	(87,090)	(3.5%)
Retail Merchandise	21,848	28,019	26,601	0.2%	0.2%	0.2%	4,753	21.8%	(1,418)	(5.1%)
Total Cost of Goods Sold	2,646,312	2,485,577	2,397,069	20.9%	20.1%	19.3%	(249,243)	(9.4%)	(88,508)	(3.6%)
Direct Op Expenses										
Salaries, Wages, Fringes	2,022,917	2,222,810	2,054,654	16.0%	17.9%	16.5%	31,737	1.6%	(168,156)	(7.6%)
Supplies & Services	996,274	951,749	959,054	7.9%	7.7%	7.7%	(37,220)	(3.7%)	7,305	0.8%
Depreciation - Equipment	103,490	64,375	59,843	0.8%	0.5%	0.5%	(43,647)	(42.2%)	(4,532)	(7.0%)
Total Direct Op Expenses	3,122,681	3,238,934	3,073,551	24.7%	26.1%	24.7%	(49,130)	(1.6%)	(165,383)	(5.1%)
Support Services										
Salaries, Wages, Fringes	808,507	952,567	853,166	6.4%	7.7%	6.9%	44,659	5.5%	(99,401)	(10.4%)
Supplies & Services	228,329	298,605	264,023	1.8%	2.4%	2.1%	35,694	15.6%	(34,582)	(11.6%)
Depreciation - Equipment	32,938	24,825	27,208	0.3%	0.2%	0.2%	(5,730)	(17.4%)	2,383	9.6%
Total Support Services	1,069,774	1,275,997	1,144,397	8.5%	10.3%	9.2%	74,623	7.0%	(131,600)	(10.3%)

Wisconsin Union
Income Statement - Revenue/Expense
Year to Date
As of September 30, 2016

	PRIOR ACTUAL	CURRENT BUDGET	CURRENT ACTUAL	PRIOR CS %	BUDGET CS %	CURRENT CS %	PRIOR YEAR VARIANCE	PRIOR YEAR %	BUDGET VARIANCE	BUDGET %
Facilities										
Salaries, Wages, Fringes	\$1,157,630	\$1,346,022	\$1,250,795	9.1%	10.9%	10.1%	\$93,165	8.0%	(\$95,227)	(7.1%)
Supplies & Services	291,380	338,707	294,812	2.3%	2.7%	2.4%	3,432	1.2%	(43,895)	(13.0%)
Depreciation - Equipment	133,600	114,474	115,193	1.1%	0.9%	0.9%	(18,407)	(13.8%)	719	0.6%
Total Facilities Expenses	1,582,610	1,799,203	1,660,800	12.5%	14.5%	13.4%	78,190	4.9%	(138,403)	(7.7%)
Programs & Leadership										
Salaries, Wages, Fringes	226,346	260,119	286,994	1.8%	2.1%	2.3%	60,648	26.8%	26,875	10.3%
Supplies & Services	120,565	195,273	170,392	1.0%	1.6%	1.4%	49,827	41.3%	(24,881)	(12.7%)
Depreciation - Equipment	4,836	4,836	4,836	0.0%	0.0%	0.0%				
Total Program Expenses	351,747	460,228	462,222	2.8%	3.7%	3.7%	110,475	31.4%	1,994	0.4%
Depreciation & Major Repairs/Maintenance										
Major Rprs/Mnt - Bldg	84,158		84,683	0.7%		0.7%	525	0.6%	84,683	
Def Bldg Exp - UBP	225,114	323,313	323,313	1.8%	2.6%	2.6%	98,199	43.6%		
Depreciation - Bldg	96,481	96,408	96,407	0.8%	0.8%	0.8%	(74)	(0.1%)	(1)	(0.0%)
Total Depr & Major Repairs/	405,753	419,721	504,403	3.2%	3.4%	4.1%	98,650	24.3%	84,682	20.2%
Utilities, Taxes & Insurance										
Unemployment Compensation	513	3,624	4,637	0.0%	0.0%	0.0%	4,124	803.9%	1,013	28.0%
Worker's Compensation	19,551	20,332	20,334	0.2%	0.2%	0.2%	783	4.0%	2	0.0%
Telephone	20,196	20,520	20,520	0.2%	0.2%	0.2%	324	1.6%		
Insurance - Property	52,800	53,856	53,856	0.4%	0.4%	0.4%	1,056	2.0%		
Heating/Cooling	28,627	33,852	22,618	0.2%	0.3%	0.2%	(6,009)	(21.0%)	(11,234)	(33.2%)
Electricity	46,051	44,763	38,781	0.4%	0.4%	0.3%	(7,270)	(15.8%)	(5,982)	(13.4%)
Water & Sewer	7,500	7,500	7,500	0.1%	0.1%	0.1%				
Trash Removal	20,835	20,835	20,835	0.2%	0.2%	0.2%				
Total Utilities, Taxes & Insur	196,073	205,282	189,081	1.5%	1.7%	1.5%	(6,992)	(3.6%)	(16,201)	(7.9%)
State/UW Assessments										
Municipal Services	27,900	29,016	29,016	0.2%	0.2%	0.2%	1,116	4.0%		
Utility Assessments	45,237	46,507	46,506	0.4%	0.4%	0.4%	1,269	2.8%	(1)	(0.0%)
UW Assessments	390,507	437,653	421,844	3.1%	3.5%	3.4%	31,337	8.0%	(15,809)	(3.6%)
Total State/UW Assessmen	463,644	513,176	497,366	3.7%	4.1%	4.0%	33,722	7.3%	(15,810)	(3.1%)
Other Expenses										
Debt Svc UBPPWU	1,684,574	1,715,223	1,715,223	13.4%	13.8%	13.8%	20,649	1.2%		
Misc - SWF, S&S	72,774	125,969	88,274	0.6%	1.0%	0.7%	15,500	21.3%	(37,695)	(29.9%)
Reimbursements	5,446	24,000	54,110	0.0%	0.2%	0.4%	48,664	893.6%	30,110	125.5%
Total Other Expenses	1,772,794	1,865,192	1,857,607	14.0%	15.0%	15.0%	84,813	4.8%	(7,585)	(0.4%)
Total Expenses	11,611,388	12,263,310	11,786,496	91.7%	98.9%	94.9%	175,108	1.5%	(476,814)	(3.9%)
Net Income/(Loss)	1,046,731	131,744	635,276	8.3%	1.1%	5.1%	(411,455)	(39.3%)	503,532	382.2%

Wisconsin Union Policy WU1-1
Wisconsin Union Bylaws

1. Bylaws

The rules contained in these Bylaws to the Constitution of the Wisconsin Union shall govern the Council and subcommittees in all cases to which they are applicable and in which they are not inconsistent with the said Constitution.

2. Personnel of the Council

a. The fifteen voting members of the Council shall be as follows:

- (1) The Chair or his/her designee of the all student governing board and three other students reflecting the multicultural and diverse nature of the campus community, as designated by the all student governing board.
- (2) ~~Three~~^{Four} students who have been recommended by the Nominating Committee, to be selected by the outgoing Council under the procedure given in Bylaw 9: one to serve as President of the Union Council and the Union Directorate, one to serve as Vice President of the Union Council and the Union Directorate ~~of External Relations Program Administration, and~~ one to serve as Vice President of the Union Council and the Union Directorate ~~for of Internal Relations Public Relations, and one to serve as Vice President of the Union Council and the Union Directorate for Project Management.~~
- (3) ~~Two~~^{One} student members of the Union Directorate to be elected by members of the incoming Directorate as a representative on the Council, serving as a chair of a Council committee. One of these members shall be the President of Hooper Council.
- (4) Two representatives of the faculty and academic staff, to be chosen by the Chancellor of the University for terms of two years, the terms expiring in alternate years.
- (5) Two alumni members, one to be chosen by the Chancellor of the University and the other by the governing board of the Alumni Association for terms of two years, the terms expiring in alternate years.
- (6) The Director of the Wisconsin Union, ex-officio.
- (7) The ~~Associate~~^{Deputy} Director: the officer of the Wisconsin Union in charge of business operations, ex-officio.

b. The non-voting members of the Council shall be as follows:

Last Date of Review:

Next Required Review Date:

Page 1 of 7

Wisconsin Union Policy WU1-1
Wisconsin Union Bylaws

- (1) The Assistant Director for Social Education Program and Leadership of the Wisconsin Union.
- (2) The Dean of Students of the UW-Madison campus.

3. Quorum

At all meetings of the Council, the presence of a majority of the voting members, which includes two of the ~~three~~four student officers and either the Secretary or the Treasurer, shall be necessary to constitute a quorum. Any act of a majority present at a meeting at which there is a quorum shall be the act of the Council, except as may be otherwise provided by the Constitution or these Bylaws.

4. Meetings

The Union Council shall hold meetings at least once a month during the regular academic year. Meetings may be called by the President or upon written request of six members of the Council. All members will be duly notified at least 48 hours before a regular or special meeting by the Secretary of the Council of the time and place of meetings.

5. Rules of Operation

- a. Meetings of the Wisconsin Union Council and its subcommittees will be conducted according to Robert's Rules of Order, newly revised. The President may appoint a parliamentarian.
- b. There will be no proxy or absentee voting. In the case where a member of Union Council is part of the selection pool for a Directorate position, the right to vote or participate in deliberations pertaining to the selection is waived.
- c. The Executive Committee of Union Council will consist of the President, the ~~two~~ three Vice Presidents, the Secretary and the Treasurer of Council. Other members of Council are privileged to attend and participate in Executive Committee sessions. The Executive Committee will set agendas for all Council meetings.
- d. The Council Executive Committee will set agendas at least five days prior to each regularly scheduled Council meeting. To be considered for placement on the agenda, items must be submitted to a member of the Executive Committee prior to the agenda meeting.
- e. Non-Council members or groups wanting to present issues to be considered by Council must submit their requests to a member of the Council Executive Committee before the agenda meeting to be considered for placement on that

Last Date of Review:

Next Required Review Date:

Page 2 of 7

Wisconsin Union Policy WU1-1
Wisconsin Union Bylaws

agenda. The request will be considered with other New Business items and may be scheduled for a later meeting or as soon as time is available.

- f. At a regular Council meeting there will be a limit of three non-member speakers for any proposal from (a), unless Council is asked to consider two sides of a question. Then there will be a limit of two non-member speakers for each position introduced. There is a 10-minute per speaker maximum presentation time for non-member speakers for presentation of the issues.

6. Annual Meeting

The annual meeting of the Union Council shall be held in April or May and shall be the occasion of recognizing outgoing and incoming Council and Directorate members.

7. Term of Office of Council Members

- a. Faculty, academic staff and alumni appointees, selected as provided in Section 2a (4) and 2a (5) of the Bylaws, shall be appointed by May 1, or as soon thereafter as possible, the terms expiring after two years, at the close of the annual meeting. Faculty, academic staff and alumni members may be reappointed to succeed themselves once.
- b. The all-student governing board representatives, selected as provided in Section 2a (1) of the Bylaws, shall be named by May 1, or as soon as possible thereafter, and shall serve for a term of approximately one year, from the close of the annual Council meeting to the close of the succeeding annual Council meeting.
- c. Union Council officers and Union Directorate representatives, selected as provided in Sections 2a (2), 2a (3), 7 and 8 of the Bylaws, shall serve for a term of approximately one year, from the close of the annual Council meeting to the close of the succeeding annual Council meeting.

8. The Union Directorate

a. Membership

The Union officers and directors of all standing committees (referred to in the constitution as "House Committees") as well as the President of the Wisconsin Hoofers, which are organized under the Union auspices, shall comprise a board to be known as the Union Directorate. Non-voting members of the Directorate include: the Union Director or her/his representative and the Assistant Director-[Social Education Program and Leadership Development](#) or her/his program staff representative.

Last Date of Review:

Next Required Review Date:

Wisconsin Union Policy WU1-1
Wisconsin Union Bylaws

b. Functions

The functions of the Directorate shall be to coordinate the work of the several committees and clubs organized under Union auspices, discuss common problems, study the techniques of effective group work and community service, and formulate social and educational programs and policies for recommendation to the Union Council.

c. Method of Selection

Committee directors shall be elected by the Council at a meeting of the Council in the spring, from the nominees submitted by a nominating committee. The nominating committee shall consist of the ~~four~~ three incoming officers of the Council and Directorate, the outgoing Vice President of Internal Relations ~~for Public Relations~~ of the Council and Directorate, and one program staff representative, appointed by the President of the Council and approved by the Council. The vote by the Council shall be taken by written ballot without further nomination and a simple majority shall be required for election.

d. Term of Office

Newly elected Directorate members shall meet and begin preparations for the ensuing year immediately after appointment but shall not assume the responsibilities of office until after the annual meeting of the Council. They shall continue as Directorate members in office through the annual meeting of the Council of the following year; the committee directors, however, being subject to recall by the Council.

e. Recall

A committee director may be recommended by a majority of the Union officers to be relieved of her/his duties for cause, subject to approval by a majority vote of Council, and consistent with guidelines established by Directorate and confirmed by Council, to insure due process for the director. Pending Council action, the director may be suspended by the Union officers if necessary for a period not exceeding the time to the next regularly scheduled Council meeting.

f. Fiscal Responsibility

The Directorate may sponsor or manage certain revenue-producing programs provided that the finances for such programs are managed within the Union revolving fund pursuant to Statute 20.906(1), that such programs have the

Last Date of Review:

Next Required Review Date:

Page 4 of 7



Wisconsin Union
Experiences for a Lifetime

Wisconsin Union Policy WU1-1

Wisconsin Union Bylaws

approval of the Union Council and that all surpluses are turned over annually to a general Union purpose with the exception of Hooper club surpluses, which are intended for future capital acquisitions.

A separate Distinguished Lecture Series fund is to be established, an account distinct from the Union's general operating fund and from other Wisconsin Union Directorate funds. The fund is directly under the auspices of WUD and will follow the same program approval process as established for all WUD free programs. All programs will be free of charge. All funds remaining at the end of the academic year will carry forward to the new fiscal year.

g. Rules

The Directorate shall formulate its own rules of parliamentary procedure.

h. Summer Operation

The summer program is implemented by the summer program coordinators selected by Union Council. The voting members of the nominating committee for the summer program coordinators are the outgoing Vice President ~~for of~~ External Relations, the incoming Vice President ~~of for~~ Internal Relations, and a program staff representative appointed by the President.

9. Officers of the Union Council and Union Directorate

- a. The Officers of the Council and Union Directorate shall be elected by the Council at a meeting of Council before spring break from the nominees submitted by a nominating committee. The nominating committee shall consist of: the outgoing President and two representatives of the Council, one of them being a non-student representative and one of them being an all student governing board representative, both appointed by the President of the Council and approved by the Council. The outgoing Vice President ~~for Public of Internal~~ Relations and one program staff representative appointed by the President shall serve as ex-officio, non-voting members of the nominating committee. The vote by Council shall be taken by written ballot without further nomination and a simple majority shall be required for election.
- b. The President of the Council shall have power to vote only in case of a tie, except in the election of the Council President and Vice Presidents.
- c. In the absence of the President, the Vice President of ~~Council and Directorate for External Relations~~ ~~Program Administration~~ shall chair the Union Council, and the Vice President ~~of Council and Directorate for Public of Internal~~ Relations shall chair Directorate.

Last Date of Review:

Next Required Review Date:

Page 5 of 7

Wisconsin Union Policy WU1-1
Wisconsin Union Bylaws

- d. The officers of the Council and Directorate may be relieved of their duties for cause by the Council, in accordance with recall procedures established by the Council. Upon written petition of five voting members of the Council, the Council will appoint a special subcommittee of the council composed of five voting members of the Council to investigate charges and determine whether the validity of charges warrant bringing the recall petition to the full Council. In such cases as the recall petition is brought to the Council, a simple majority of the voting members of Council is required for recall with the person under consideration of recall not eligible to vote. Typical grounds for recall would include, but not be limited to, the following: negligence of duty, unavailability to perform job functions as described in the officer job description policy.
- e. The officers of the Council and the Directorate shall be replaced only in the same manner in which they were originally selected.

10. Union Council-Union Directorate Meeting

A joint meeting of Union Council and Union Directorate shall be held in the fall semester.

11. Director's Duties

The Director shall be the staff officer generally responsible for the operations of the Wisconsin Union. The Director shall be employed by the Board of Regents, which shall take into consideration the recommendations of the Union Council and the President.

- a. The Director shall be charged with coordinating all the various functions of the buildings and the interests of all the various groups served by the buildings.
- b. The Director shall make reports from time to time showing the operations of the Wisconsin Union.
- c. The Director may act for the Union Council, discharging the functions of the Union Council, when so requested by the Union Council.
- d. The Director, or a staff member whom she/he may appoint as a substitute, shall be a non-voting member of all standing committees and special interest clubs organized under the auspices of the Union.
- e. The Director's further functions in the buildings, beyond the responsibility to the Board of Regents, shall be as the Union Council may provide.

Last Date of Review:

Next Required Review Date:

Page 6 of 7

Wisconsin Union Policy WU1-1
Wisconsin Union Bylaws

12. Amendments to Bylaws

These Bylaws may be amended at any regular or special meeting of the Council, by a vote of eight (8) members of the Council, provided the amendment is submitted in writing at least one week previously at either a regular or special meeting.

For interpretations, resolution of problems, and special situations contact:

Secretary of Union Council: WU Director

Chair of Union Council: WU President

Policy Authority (suggested amendments should go through these bodies):

Executive Committee of Union Council

Union Council

Date(s) of Action:

March 6, 1950; Rerun April 30, 1952; Revised March 21, 1956; Amended March 24, 1965; Rerun June 12, 1968; Amended April 15, 1969; Amended March 11, 1970; Rerun December 4, 1970; Amended March 8, 1972; Amended April 12, 1972; Amended September 13, 1972; Amended October 11, 1972; Amended September 12, 1973; Amended February 11, 1976; Amended February 7, 1978; Amended February 22, 1978; Amended December 10, 1979; Amended April 26, 1982; Amended March 14, 1984; Amended May 7, 1990; Amended December 4, 1990; Amended March 31, 1992; Amended December 2, 2002; Amended April 24, 2003; Amended February 16, 2004; Amended April 20, 2004; Amended September 17, 2008; Amended December 11, 2008; [Revised November 8, 2016;](#)

Last Date of Review:

Next Required Review Date:

Page 7 of 7



Wisconsin Union
Experiences for a lifetime



Bike Shelter at Union South
Facilities Planning and Management | Campus Planning and Landscape Architecture
05.24.2016 | Layout and Model JLB, GFM, MER



WISCONSIN
UNIVERSITY OF WISCONSIN-MADISON



Bike Shelter at Union South
Facilities Planning and Management | Campus Planning and Landscape Architecture
05_24_2016 | Layout and Model JLB GFM/MFR



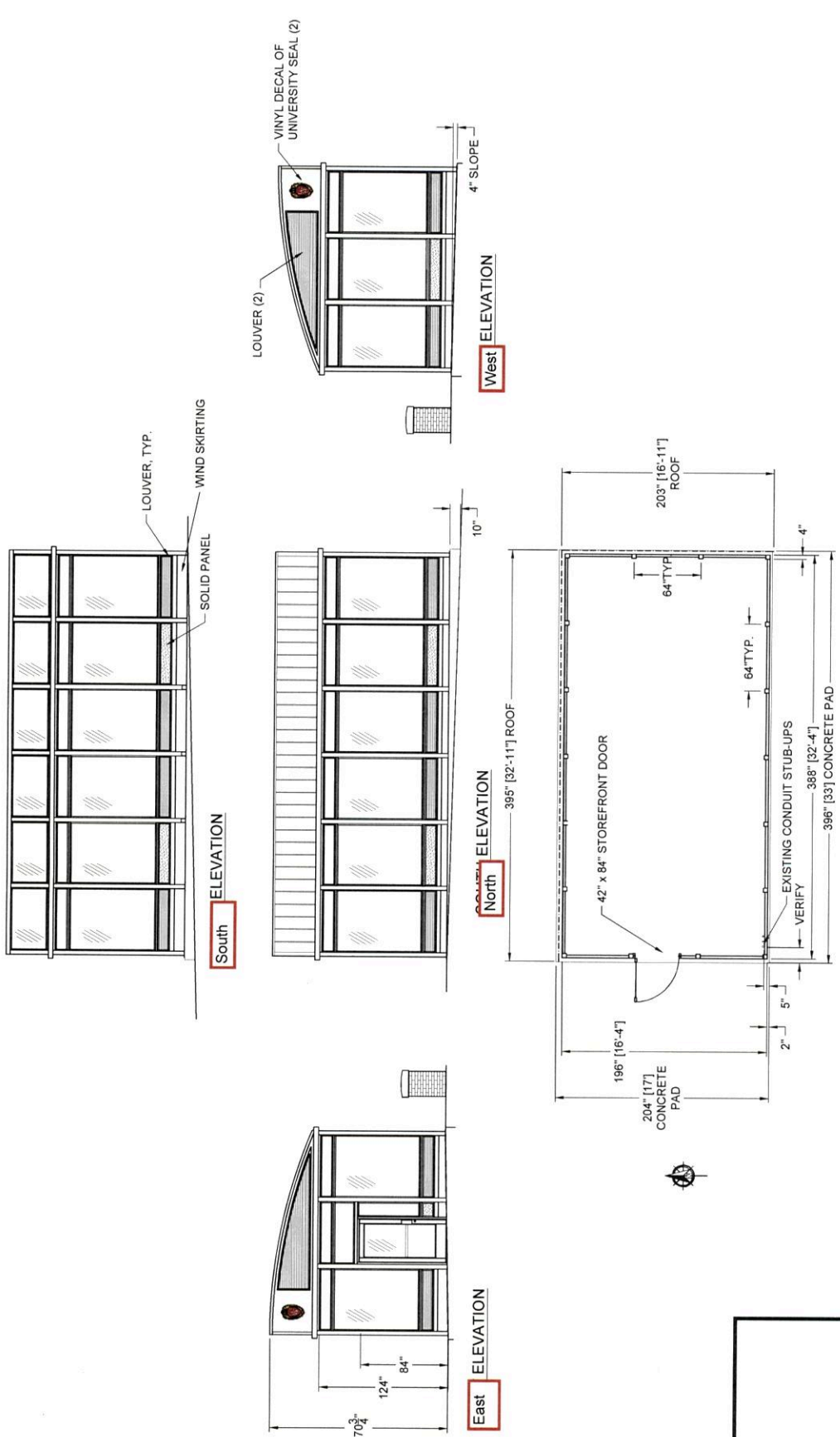
UNION SOUTH
1308 WEST DAYTON



Bike Shelter at Union South
Facilities Planning and Management | Campus Planning and Landscape Architecture
05.24.2016 | Layout and Model JLB/GFM/MFR



WISCONSIN
UNIVERSITY OF WISCONSIN-MADISON



PLAN VIEW

REVISIONS 5-20-14 A: STOREFRONT DOOR TO BE MEDIUM STYLE 4-6-16 PROPOSAL: REMOVE OVERHEAD DOOR AND REBUILD WEST WALL WITH SINGLE 42' SF DOOR		PROJECT NAME 111190 (16411) UNIVERSITY OF WISCONSIN, MADISON: BUCKY WAGON STATION	
BDI	BDI	REV	DATE
		1-16-14	1-16-14
		10-3-13	10-3-13
		AG	AG
		BDI	BDI
		17' X 33' GARAGE / SHOWROOM	17' X 33' GARAGE / SHOWROOM
		1/8" = 1'-0"	1/8" = 1'-0"
		4-27-14	4-27-14
		4-6-16	4-6-16
		2	2
		7	7
		11190	11190

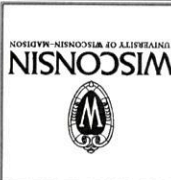
THIS DRAWING IS PROPRIETARY AND FOR THE SOLE USE OF OUR CUSTOMER AND MAY NOT BE COPIED OR REPRODUCED WITHOUT PRIOR WRITTEN CONSENT FROM DUO-GARD INDUSTRIES, INC. LEAD THE BEARS UPON RECEIPT OF SIGNED SHOP DRAWINGS

APPROVAL SIGNATURE: _____ DATE: _____

APPROVAL SIGNATURE: _____ DATE: _____

DUO-GARD
 FORCE AHEAD.
 Duo-Gard Industries, Inc.
 Tel: (254) 207-9700 Fax: (254) 207-7996
 www.duo-gard.com

REGISTERED ENGINEER



UNIVERSITY OF WISCONSIN - MADISON
 FACILITIES PLANNING AND LANDSCAPE ARCHITECTURE
 61 Walnut Street
 Madison, Wisconsin 53726
 Suite 930 WVAE

Project: Bike Shelter at Union South
 Drawing Title: Existing Site
 Building Number: #0088
 File Location/Title Location: S:\CAD\PLANNING\Spec\Project Sheets\Bicycle Wagon Shelter\Bike Shelter\Bike Shelter-Union South.dwg
 Project Number: #NA
 Date: 07-20-2015
 Drawn By: JLB
 Checked By: JLB
 Revision No.: 1
 Date: 07-20-2015
 Revision No.: 2
 Date: 08-15-2015

Graphic Scale: 0' 2.5' 5' 10'
 North:
 Sheet: L-1
 Of: 3

Notes

- Field verify all grades.
- Field verify all site amenities.
- Utilities are not shown. Verify all utility locations takes place. Call 811 or (800) 242-8511.
- Contact Digger's Hotline before any excavation. Call (877) 500-9592 for emergencies only.

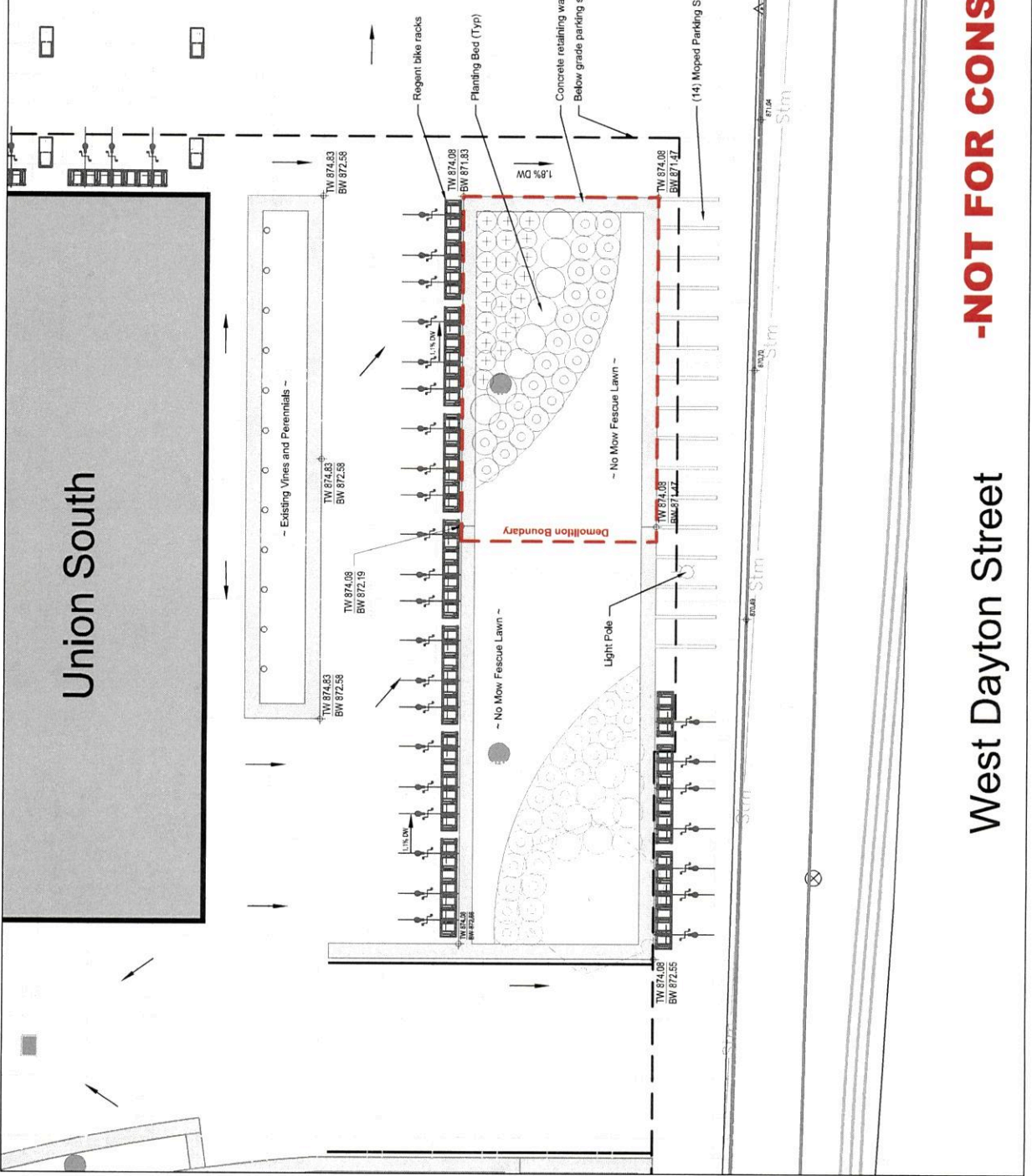
Opportunities & Constraints of Site I

Opportunities

- 1,450' and 200' from east bound Route 80 bus stops
- Adjacent to West Dayton Street bike lanes
- Located in south central campus and close to many buildings
- Adjacent to Union South and activities
- Approximately two blocks from the Southwest Commuter Path
- Viable location for security
- Near B Cycle facilities
- Adjacent to existing bike racks
- Union South has a commuter shower
- Could generate revenue from Camp Randall Stadium activities and games.

Constraints

1. Would remove existing planting bed and pervious walls and require reconstruction of one retaining wall section.
2. Minor impact to sight lines for those existing from the Union South drop off
3. Would impact future bike station proposed for same location and require additional cost to move the shelter again when bike station is constructed
4. There is only one commuter shower in Union South which may not be able to support demand.



-NOT FOR CONSTRUCTION-

West Dayton Street



UNIVERSITY OF WISCONSIN-MADISON

FACILITIES PLANNING AND MANAGEMENT
 Campus Planning & Landscape Architecture
 610 Walnut Street
 Madison, Wisconsin 53726

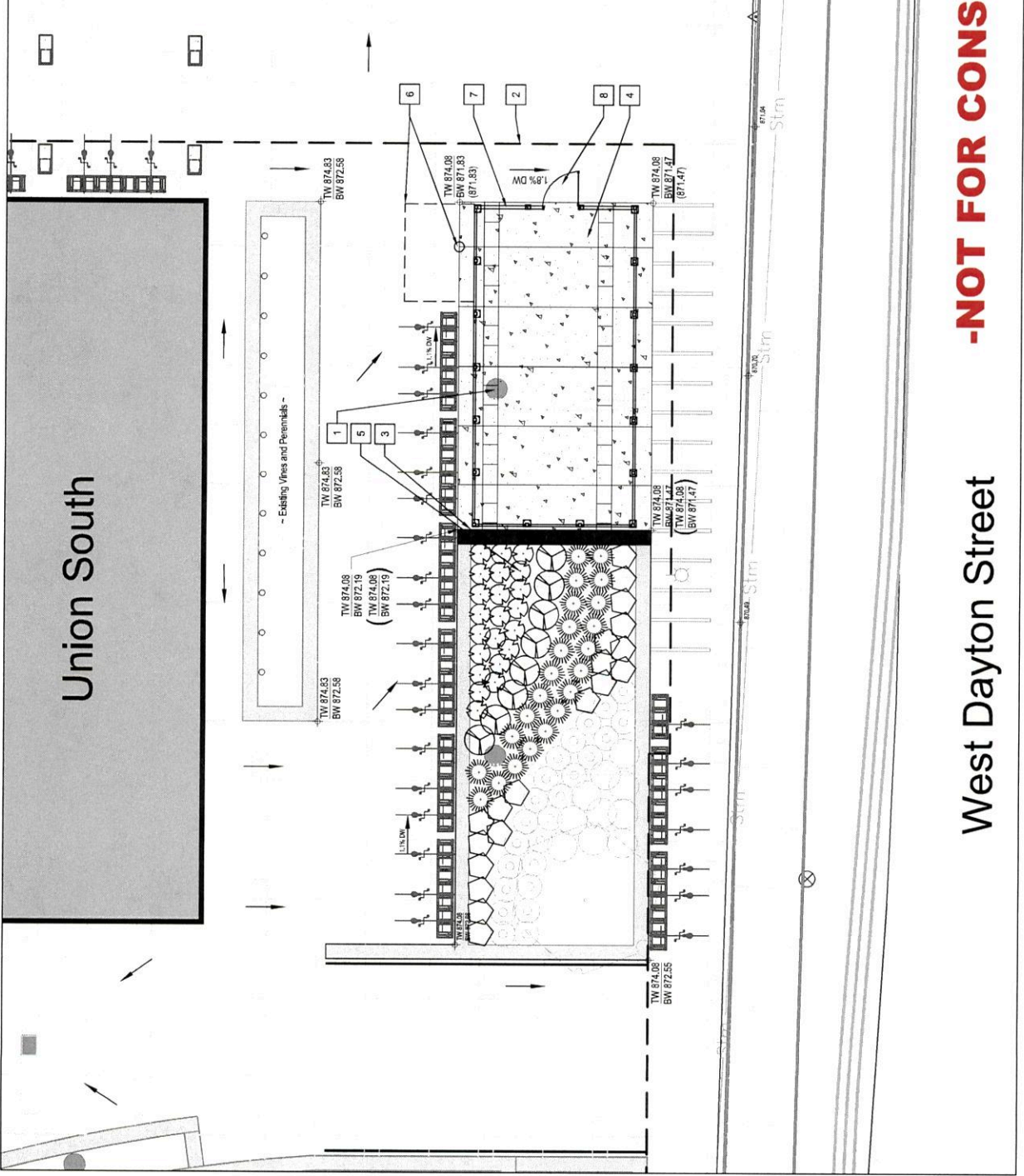
Project: Bike Shelter at Union South
 Drawing Title: Concept Plan
 Building Number: #0088
 File Location: \\fs-lca\proj\11\0088\GIS\Project_Site\Shelter-Union South.dwg
 Project Number: #NA
 Drawn By: JILB
 Date: 07-20-2015
 Revision No.: 1
 Date: 08-15-2016
 By: JILB

Graphic Scale:
 0' 2.5' 5' 10'
 North:

Sheet: L-2
 Of: 3

Key Notes!
 1 Area drain will be removed from the west side of planting bed.
 2 The site is above parking structure. Verify structure can support weight of proposed concrete and shelter.
 3 New concrete retaining wall shall match design, color and finish of existing concrete retaining wall.
 4 New concrete flatwork (sidewalk) shall have finish and control joints that match existing adjacent sidewalk.
 5 Transplant existing perennials on east side of planter as shown. Purchase additional plants as needed to complete plan. Contact Campus Planning and Landscape Architecture for landscape plan.
 6 Proposed Fixt station and setbacks
 7 Bike shelter
 8 42" x 84" Storefront door

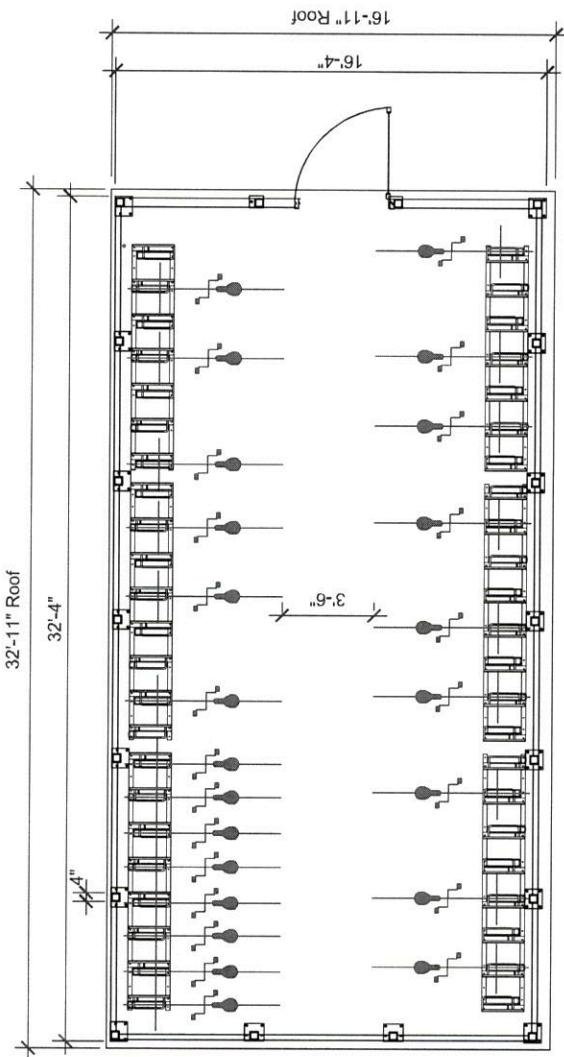
Notes!
 1. Will need minor alteration to an existing conditional use from City of Madison.
 2. Remove skateboard deterrence hardware (5 pieces) from retaining wall to be demolished. Save hardware for reuse.
 3. Shelter will need electric and card access.
 4. Water from shelter downspouts shall be connected to existing stormwater or directed to existing planting bed. Further investigation needed.
 5. 4" max grade change between shelter posts for leveling mechanism.



-NOT FOR CONSTRUCTION-

West Dayton Street

- Notes!**
- 46 bike stalls are proposed in shelter.
 - Use single sided Regent bike racks from Madrax, galvanized finish.
 - (4) 8 stall racks
 - (2) 7 stall racks
 - Surface mount bike racks using stainless steel anchor sleeves and bolts.
 - Storefront door is 42"x84".



-NOT FOR CONSTRUCTION-